



GMT MONTHLY MEMBERSHIP PROGRESS REPORT

Results as of: 5/31/2020

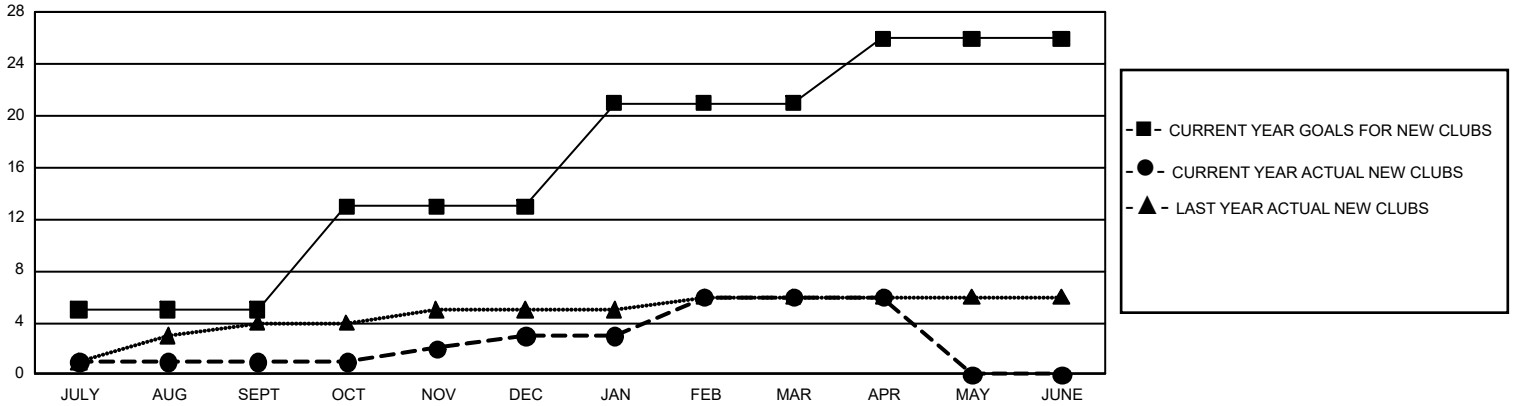
GMT Constitutional Area 2, Group B

GMT: OPEN

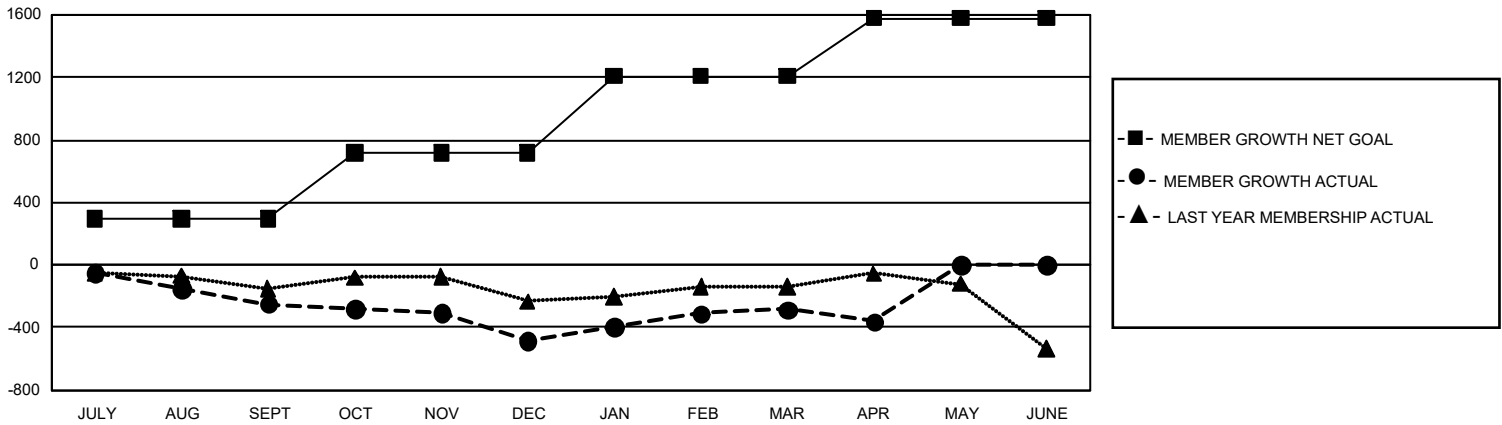
REPORT DOES NOT INCLUDE CLUBS IN UNDISTRICTED AREAS.

| Clubs | | | | Members | | | |
|-----------------------|---------------|-----------|---------------|-----------------------|------------------------|----------------------|--|
| RESULTS FOR 2019-2020 | | | | RESULTS FOR 2019-2020 | | | |
| QUARTER | NEW CLUB GOAL | NEW CLUBS | DROPPED CLUBS | QUARTER | MEMBER GROWTH NET GOAL | MEMBER GROWTH ACTUAL | DROPPED MEMBERS ACTUAL (including transfers) |
| JULY/AUG/SEPT | 15 | 1 | 3 | JULY/AUG/SEPT | 885 | 337 | 530 |
| OCT/NOV/DEC | 24 | 2 | 3 | OCT/NOV/DEC | 1,266 | 578 | 761 |
| JAN/FEB/MAR | 24 | 3 | 4 | JAN/FEB/MAR | 1,470 | 704 | 434 |
| APR/MAY/JUNE | 15 | 0 | 1 | APR/MAY/JUNE | 1,119 | 111 | 154 |

GOALS AND ACTUAL NEW CLUBS CUMULATIVE



GOALS AND ACTUAL MEMBERS CUMULATIVE



| | | |
|--|---|--|
| DROPPED CLUBS: 11 | 507 CLUBS OF 931 ADDED 1 OR MORE NEW MEMBERS | GENDER DISTRIBUTION MALE 14,499 (66.14%) FEMALE 7,422 (33.86%) |
| DROPPED MEMBERS DECEASED 325 CLUB CANCELLED 47 OTHER 1,505 <hr/> TOTAL 1,877 | CLICK HERE FOR CUMULATIVE MEMBERSHIP DATA | TOTAL FAMILY UNIT MEMBERS 4,109 FAMILY MEMBERS PAYING HALF DUES 2,094 |